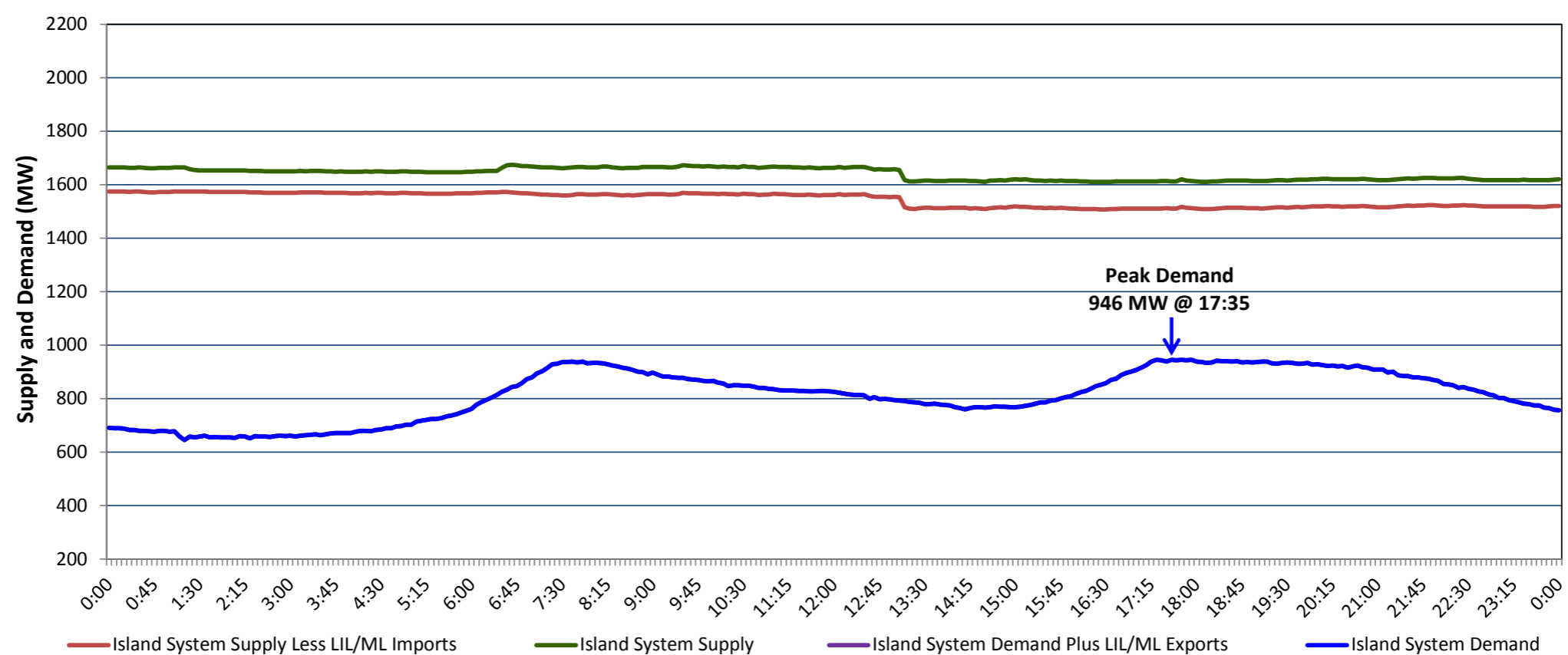


**Newfoundland Labrador Hydro (NLH)  
Supply and Demand Status Report Filed Tuesday, November 05, 2019**

**Section 1  
Island Interconnected System Supply, Demand & Exports  
Actual 24 Hour System Performance For Monday, November 04, 2019**



**Supply Notes For November 04, 2019**

- A As of 1150 hours, August 18, 2019, Hinds Lake Unit unavailable due to planned outage (75 MW).
- B As of 0801 hours, September 29, 2019, Hardwoods Gas Turbine unavailable due to planned outage (50 MW).
- C As of 0830 hours, October 04, 2019, St. Anthony Diesel Plant available at 8.85 MW (9.7 MW).
- D As of 1305 hours, October 24, 2019, Stephenville Gas Turbine available at 25 MW (50 MW).
- E As of 2107 hours, October 25, 2019, Bay d'Espoir Unit 3 available 70 MW (76.5 MW).
- F As of 0643 hours, October 26, 2019, Bay d'Espoir Unit 1 unavailable due to planned outage (76.5 MW).
- G As of 1548 hours, November 02, 2019, Holyrood Unit 3 removed from service for economic dispatch (150 MW).

**Section 2  
Island Interconnected Supply and Demand**

Tue, Nov 05, 2019	Island System Outlook <sup>3</sup>	Seven-Day Forecast	Temperature (°C)		Island System Daily Peak Demand (MW)	
			Morning	Evening	Forecast	Adjusted <sup>7</sup>
Available Island System Supply: <sup>5</sup>	1,672 MW	Tuesday, November 05, 2019	3	3	1,065	973
NLH Island Generation: <sup>4</sup>	1,310 MW	Wednesday, November 06, 2019	6	10	990	899
NLH Island Power Purchases: <sup>6</sup>	60 MW	Thursday, November 07, 2019	2	3	1,145	1,052
Other Island Generation:	200 MW	Friday, November 08, 2019	5	9	1,065	973
ML/LIL Imports:	102 MW	Saturday, November 09, 2019	4	0	1,200	1,106
Current St. John's Temperature & Windchill:	2 °C	Sunday, November 10, 2019	2	3	1,065	973
7-Day Island Peak Demand Forecast:	1,200 MW	Monday, November 11, 2019	2	3	1,030	938

**Supply Notes For November 05, 2019**

- Notes:
1. Generation outages for running and corrective maintenance are included. These are not unusual for power system operations. They generally do not impact customer supply. The power system operators schedule outages to system equipment whenever possible to coincide with periods when customer demands are low and sufficient supply reserves are available. However, from time to time equipment outages are necessary and reserves may be impacted.
  2. Due to the Island system having no synchronous connections to the larger North American grid, when there is a sudden loss of large generating units there may be a requirement for some customer's load to be interrupted for short periods to bring generation output equal to customer demand. This automatic action of power system protection, referred to as under frequency load shedding (UFLS), is necessary to ensure the integrity and reliability of system equipment. Under frequency events have typically occurred 5 to 8 times per year on the Island Interconnected System and the resultant customer load interruptions are generally less than 30 minutes. With the activation of the Maritime Link frequency controller during the winter of 2018, UFLS events have occurred less frequently.
  3. As of 0800 Hours.
  4. Gross output including station service at Holyrood (24.5 MW) and improved NLH hydraulic output due to water levels (35 MW).
  5. Gross output from all Island sources (including Note 4).
  6. NLH Island Power Purchases include: CBPP Co-Gen, Nalcor Exploits, Rattle Brook, Star Lake, Wind Generation and capacity assistance (when applicable).
  7. Adjusted for curtailable load, market activities and the impact of voltage reduction when applicable.

**Section 3  
Island Peak Demand Information  
Previous Day Actual Peak and Current Day Forecast Peak**

Mon, Nov 04, 2019	Actual Island Peak Demand <sup>8</sup>	17:35	946 MW
Tue, Nov 05, 2019	Forecast Island Peak Demand		1,065 MW

- Notes: 8. Island Demand / LIL / ML Exports (where applicable) is supplied by NLH generation and purchases, plus generation owned and operated by Newfoundland Power and Corner Brook Pulp & Paper (Deer Lake Power, DLP).